



Schuchart Water Pump Station

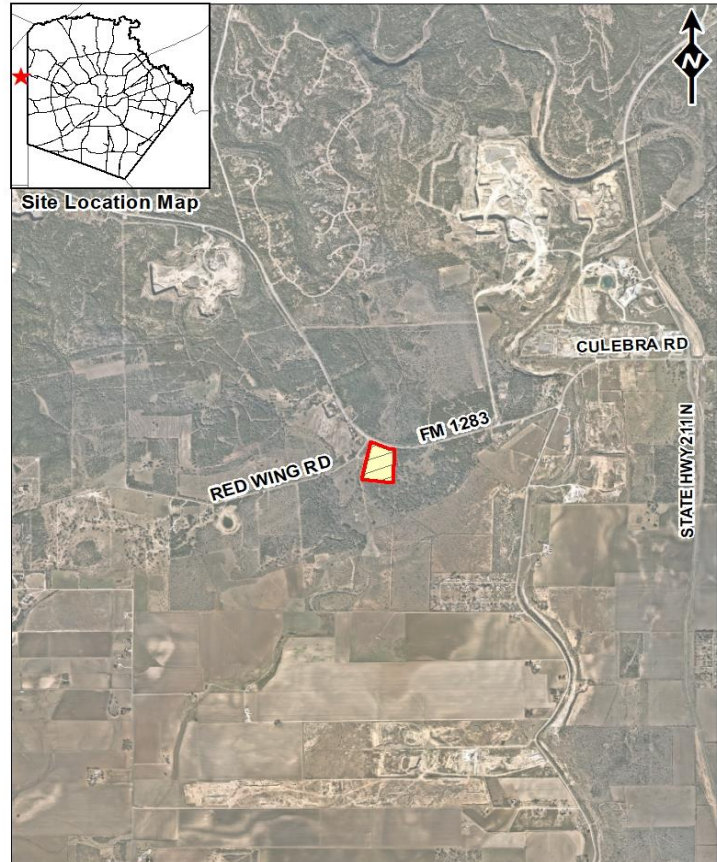
The Schuchart Water Pump Station is a development project located in east Medina County, west of the intersection of Red Wing Rd. and FM 1283. The wells associated with this facility will be constructed under a separate project.

When Will Work Occur?

- Construction is slated to start in the last quarter of 2024.
- Estimated construction duration is over 30 months.
- Construction budget more than \$20,000,000

Construction Elements:

- This project includes the construction of a ground storage tank, pump station, electrical building, chemical treatment equipment and associated structures.
- Construction work will take place in an undeveloped area.



For more information:

Ismael Rosales, P.E.

210-233-3705

SAWS Public Relations:

Cecilia Picazo

210-233-3750

